



Templegate View | | LS15 0HQ

£237,000

Two bedroom semi-detached bungalow | Council Tax Band C | EPC rating E

**Emsleys** | estate agents

**\*\*\* TWO BEDROOM SEMI-DETACHED BUNGALOW IN A POPULAR LOCATION \*SOLD WITH NO CHAIN \*\*\***

This semi-detached bungalow is set upon a popular estate adjacent to Temple Newsam. The property offers PVCu double-glazed windows and well proportioned accommodation but is in need of a full renovation likely to include rewiring and installation of central heating along with full decoration and re-carpeting.

The accommodation briefly comprises; entrance hall, spacious lounge, kitchen, two double bedrooms and a bathroom with a fitted suite. Outside there are gardens to the front and rear plus ample off-road parking provided by the driveway which in turn leads to the garage. Outside there is a garden to the front and rear.

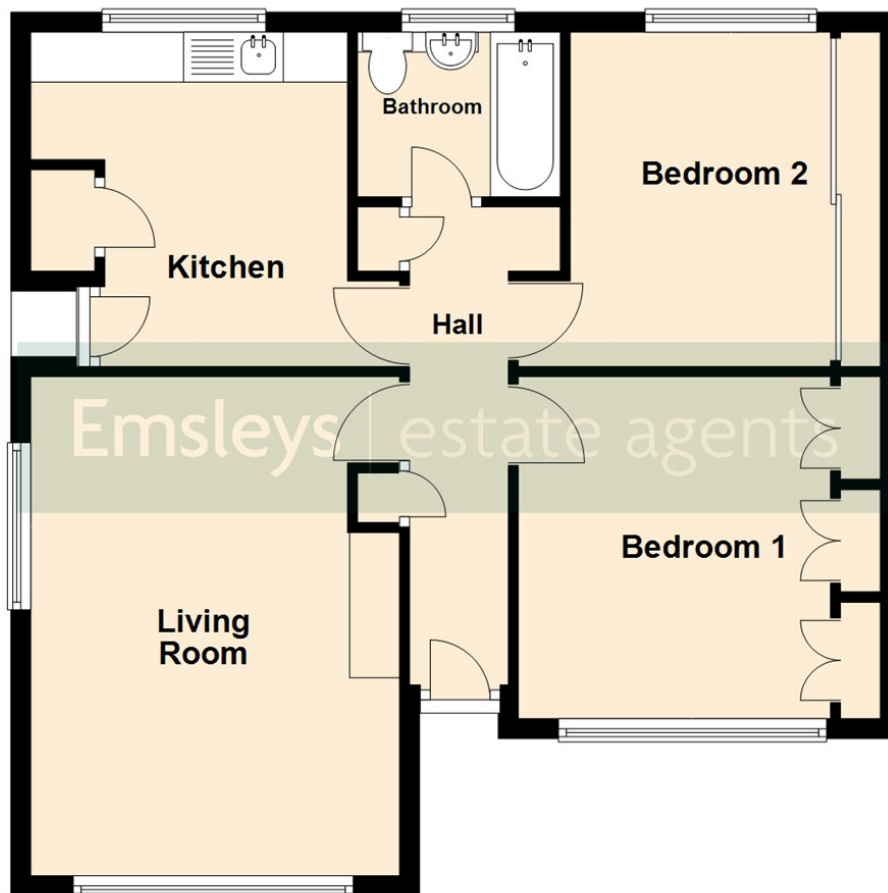
Temple Newsam is within walking distance of Temple Newsam country park estate which offers a Tudor-Jacobean house, open parkland and a farm. For the shopper there is a brand new development just off junction 46 of the M1 North - 'The Springs' in Thorpe Park includes a cinema, M&S food hall. Additional shops, cafes and bars are available at Crossgates shopping centre which has its own railway station. The property is close to local primary and secondary schools and offers fantastic transport links via the A63 and motorway network which is just a five minute drive away.

**\*\*\* Call now to arrange your viewing \*\*\***



## Ground Floor

Approx. 64.1 sq. metres (690.0 sq. feet)



Total area: approx. 64.1 sq. metres (690.0 sq. feet)

These details are for guidance only and complete accuracy cannot be guaranteed. If there is any point, which is of particular importance, verification should be obtained. They do not constitute a contract or part of a contract. All measurements are approximate. No guarantee can be given with regard to planning permissions or fitness for purpose. No apparatus, equipment, fixture or fitting has been tested. Items shown in photographs are NOT necessarily included. Interested Parties are advised to check availability and make an appointment to view before travelling to see a property.



35 Austhorpe Road | Crossgates | Leeds | LS15 8BA  
t: 0113 284 0120 | [www.emsleysestateagents.co.uk](http://www.emsleysestateagents.co.uk)

**Emsleys** | estate agents